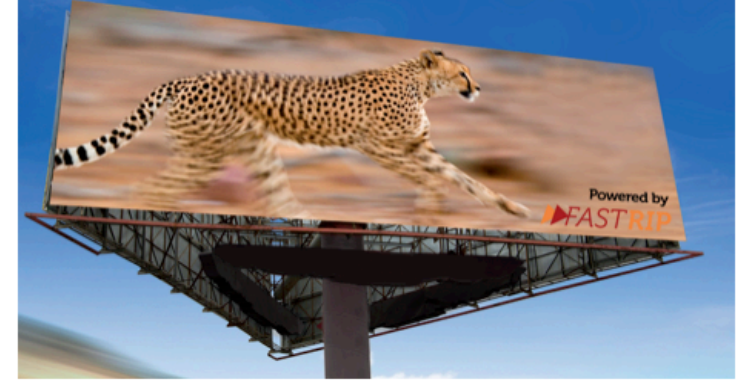




Fiery® proServer and Fiery XF Spec Matrix



Application	Proofing	Production				Wide & Superwide Production			
Product Name	Fiery XF Proofing	Fiery XF Production	Fiery XF Premium	Fiery XF Print & Cut	Fiery XF for EFI Wide Format	Fiery XF for VUTEK	Fiery proServer SE	Fiery proServer Premium	Fiery proServer Core
Supported Printers	EFI + 3rd party	EFI + 3rd party	EFI + 3rd party	EFI + 3rd party	EFI + 3rd party	EFI + 3rd party	EFI only	EFI + 3rd party	EFI + 3rd party

System Requirements										
Server Platform	Mac or Windows	Mac or Windows	Mac or Windows	Mac or Windows	Mac or Windows	Mac or Windows	Mac or Windows	EFI PRO ⁹⁰	EFI QX ¹⁰⁰	EFI E400
Fiery XF: Supported Server Operating System(s) Fiery proServer: Installed Server Operating System(s)	Windows 7/8/8.1/10 and 2012/2016 Servers 64-bit support	Windows 7/8/8.1/10 and 2012/2016 Servers 64-bit support	Windows 7/8/8.1/10 and 2012/2016 Servers 64-bit support	Windows 7/8/8.1/10 and 2012/2016 Servers 64-bit support	Windows 7/8/8.1/10 and 2012/2016 Servers 64-bit support	Windows 7/8/8.1/10 and 2012/2016 Servers 64-bit support	Windows 7/8/8.1/10 and 2012/2016 Servers 64-bit support	Windows [®] 10 Professional for Embedded Systems x64	Windows [®] 10 Professional for Embedded Systems x64	Windows [®] 10 Professional for Embedded Systems x64
	Mac OS X 10.10/11/12/13 32- & 64-bit running in 32-bit	Mac OS X 10.10/11/12/13 32- & 64-bit running in 32-bit	Mac OS X 10.10/11/12/13 32- & 64-bit running in 32-bit	Mac OS X 10.10/11/12/13 32- & 64-bit running in 32-bit	Mac OS X 10.10/11/12/13 32- & 64-bit running in 32-bit	Mac OS X 10.10/11/12/13 32- & 64-bit running in 32-bit	Mac OS X 10.10/11/12/13 32- & 64-bit running in 32-bit			
Fiery XF: Minimum / Recommended Server Memory Fiery proServer: Installed Server Memory	8 / 32 GB	8 / 32 GB	8 / 32 GB	8 / 32 GB	8 / 32 GB	8 / 32 GB	8 / 32 GB	32 GB	32 GB	16 GB
Fiery XF: Minimum / Recommended Server HDD Fiery proServer: Installed HDD	300 GB / 1.5 TB	300 GB / 1.5 TB	300 GB / 1.5 TB	300 GB / 1.5 TB	300 GB / 1.5 TB	300 GB / 1.5 TB	300 GB / 1.5 TB	1 TB	4 x 2 TB	2 x 1 TB
Fiery XF: Minimum Server CPU Fiery XF: Recommended Server CPU Fiery proServer: Installed Server CPU	Minimum: Quad Core CPU with 2 GHz	Minimum: Quad Core CPU with 2 GHz	Minimum: Quad Core CPU with 2 GHz	Minimum: Quad Core CPU with 2 GHz	Minimum: Quad Core CPU with 2 GHz	Minimum: Quad Core CPU with 2 GHz	Minimum: Quad Core CPU with 2 GHz	1 x Intel CORE I7-4770S, 3.1GHz,	2 x Intel XEON E5-2643, 4 x 3.3 GHz	1 x Intel CORE i7-6700, 4 x 3.4 GHz
	Recommended Windows: 8-Core CPU with 3 GHz	Recommended Windows: 8-Core CPU with 3 GHz	Recommended Windows: 8-Core CPU with 3 GHz	Recommended Windows: 8-Core CPU with 3 GHz	Recommended Windows: 8-Core CPU with 3 GHz	Recommended Windows: 8-Core CPU with 3 GHz	Recommended Windows: 8-Core CPU with 3 GHz			
	Recommended MAC: 6-Core Intel Xeon Westmere with 3.33 GHz	Recommended MAC: 6-Core Intel Xeon Westmere with 3.33 GHz	Recommended MAC: 6-Core Intel Xeon Westmere with 3.33 GHz	Recommended MAC: 6-Core Intel Xeon Westmere with 3.33 GHz	Recommended MAC: 6-Core Intel Xeon Westmere with 3.33 GHz	Recommended MAC: 6-Core Intel Xeon Westmere with 3.33 GHz	Recommended MAC: 6-Core Intel Xeon Westmere with 3.33 GHz			
Client Platform	Mac or Windows	Mac or Windows	Mac or Windows	Mac or Windows	Mac or Windows	Mac or Windows	Mac or Windows	Mac or Windows	Mac or Windows	Mac or Windows
Supported Client Operating System(s)	Windows 7/8/8.1/10 and 2012/2016 Servers	Windows 7/8/8.1/10 and 2012/2016 Servers	Windows 7/8/8.1/10 and 2012/2016 Servers	Windows 7/8/8.1/10 and 2012/2016 Servers	Windows 7/8/8.1/10 and 2012/2016 Servers	Windows 7/8/8.1/10 and 2012/2016 Servers	Windows 7/8/8.1/10 and 2012/2016 Servers	Windows 7/8/8.1/10 and 2012/2016 Servers	Windows 7/8/8.1/10 and 2012/2016 Servers	Windows 7/8/8.1/10 and 2012/2016 Servers
	Mac OS X 10.10/11/12/13	Mac OS X 10.10/11/12/13	Mac OS X 10.10/11/12/13	Mac OS X 10.10/11/12/13	Mac OS X 10.10/11/12/13	Mac OS X 10.10/11/12/13	Mac OS X 10.10/11/12/13	Mac OS X 10.10/11/12/13	Mac OS X 10.10/11/12/13	Mac OS X 10.10/11/12/13
Both: 32- & 64-bit support	Both: 32- & 64-bit support	Both: 32- & 64-bit support	Both: 32- & 64-bit support	Both: 32- & 64-bit support	Both: 32- & 64-bit support	Both: 32- & 64-bit support	Both: 32- & 64-bit support	Both: 32- & 64-bit support	Both: 32- & 64-bit support	Both: 32- & 64-bit support
Minimum Client Memory	3 GB	3 GB	3 GB	3 GB	3 GB	3 GB	3 GB	3 GB	3 GB	3 GB
Minimum CPU Client	Dual Core CPU with 2 GHz	Dual Core CPU with 2 GHz	Dual Core CPU with 2 GHz	Dual Core CPU with 2 GHz	Dual Core CPU with 2 GHz	Dual Core CPU with 2 GHz	Dual Core CPU with 2 GHz	Dual Core CPU with 2 GHz	Dual Core CPU with 2 GHz	Dual Core CPU with 2 GHz
Options	Fiery XF Proofing	Fiery XF Production	Fiery XF Premium	Fiery XF Print & Cut	Fiery XF for EFI Wide Format	Fiery XF for VUTEK	Fiery proServer SE	Fiery proServer Premium	Fiery proServer Core	
Spot Color Option	✓	✓	✓	✓	✓	✓	✓	✓	✓	
Color Profiler Option	○	○	✓	○	○	✓	✓	✓	✓	
Color Verifier Option	✓	○	○	○	○	○	✓	✓	✓	
Cut Marks Option	○	○	✓	○	○	✓	✓	✓	✓	
Cut Server Option (Windows only)	○	○	○	○	○	○	○	○	○	
OneBit Option	○	○	○	○	○	○	○	○	○	
Printer Option M	○	○	○	○	○	○	-	○	-	
Printer Option XL	○	○	○	○	○	○	-	○	-	
Printer Option XXL	○	○	○	○	○	○	-	○	-	
Printer Option M-XXL (not orderable)	✓	✓	✓	-	-	-	-	✓	-	
Printer Option EFI	○	○	○	○	✓	✓	-	✓	✓	
Printer Option EFI SE	-	-	-	-	-	-	✓	-	-	
Printer Option Wide Format	○	○	○	○	○	○	-	○	-	
Printer Option Super Wide Format	○	○	○	○	○	○	-	○	-	
Print & Cut Option	○	○	○	✓	○	○	-	○	-	
File Export Option	○	○	○	○	○	✓	-	✓	-	
Softproof Option	○	○	○	○	○	○	-	○	-	
Fiery Option	○	○	○	○	○	○	-	○	-	
Sign Flow Option	-	-	-	-	-	-	-	✓	-	
EFI ES-2000 Spectrophotometer	○	○	○	○	○	✓ / ○ (1)	✓	✓	○	

Legend: ✓ Standard ○ Optional - not applicable

(1) Two available configurations: One with the EFI ES-2000 included and one with the ES-2000 optional.

Fiery Foundations